

## NUHS GP Engagement Event

### HIGHLIGHTS FROM THE NUHS RHS GP ENGAGEMENT EVENT

The 2016 NUHS RHS GP Engagement Event was held on 16th April, to recognise GP partners who care for our patients in the community. This event was also used to introduce the Primary Care Network (PCN) programme and update GPs on the current and potential partnerships with NUHS.

### STRENGTHENING PARTNERSHIPS WITH OUR GPs AS WE MOVE BEYOND HOSPITAL TO COMMUNITY

“GPs are important partners in our community, and we would like to do more together with you,” said Adjunct Associate Professor Joe Sim, Deputy Chief Executive (Clinical Enterprise), National University Health System (NUHS) and Chief Executive Officer, National University Hospital (NUH), to about 150 GPs who attended the NUHS RHS GP Engagement Event on the 16th of April this year.



Attending GPs listening intently to the opening speech by Adjunct Associate Professor Joe Sim. (Photo credit: RHS Planning Office)

In his remarks to attending GPs, Adjunct A/Prof Sim emphasised that a fundamental shift is needed in our approach to ageing and health, in order to provide sustainable care for our rapidly ageing population.

He shared that a key thrust will be to transform care delivery from the current hospital-centric model to one that is community-based. With this shift, more resources will be channelled to primary care, to cater to the increase in patient load seen by GPs.

### DELIVERING COORDINATION OF CARE THROUGH PCNs

To support partnering GPs, NUHS will develop PCNs that will reinforce our care partnership with them. Their patients will in turn have access to nursing, allied health and specialist care, and also social and community intervention. By improving care delivery, the PCN initiative will also move us closer to our vision of “One Family, One Family Doctor”. Adjunct A/Prof Sim announced that the first PCN will be established in Bukit Panjang (PCN@BP), and this initiative will be extended to other areas subsequently.

“ I see it [PCN@BP] as a great opportunity to empower the community healthcare network, that will ultimately benefit our patients, our community and our Nation as a whole.

Dr Kwong Kum Hoong, Family Physician, Princeton Family Clinic

### MORE ABOUT PCN@BP

The PCN@BP empowers GPs to deliver person-centric care for patients and take on a higher chronic patient load from the polyclinics and Specialist Outpatient Clinics (SOCs).

They will be supported by a nurse, who will provide clinical advice and education; a care coordinator; who will make the necessary referrals; and NUH specialists, who will give clinical input for the patient’s different conditions. PCN@BP also offers a platform for GPs to benchmark clinical outcomes and learn from one another.

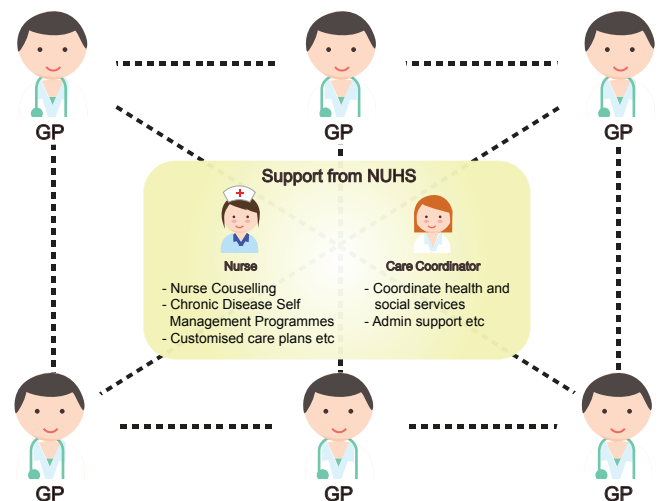


Illustration of PCN@BP

### OPEN ACCESS TO OESOPHAGO-GASTRO DUODENOSCOPY AND COLONOSCOPY

Our ‘Open Access’ initiative will also allow GPs to directly refer their patients for oesophago-gastro duodenoscopy (OGD) and colonoscopy, bypassing the requirement for patients to first see a specialist at a Specialist Outpatient Clinic.

### CANCER PREVENTION IN THE COMMUNITY

Another area for potential collaboration involves improving cancer prevention and care in the community. The National University Cancer Institute, Singapore (NCIS) has proposed to partner GPs in establishing community-based Cancer Prevention Care Clinics.

### HEALTH SCREENING AND EARLY INTERVENTION BY GPs

Adjunct A/Prof Sim highlighted the need to move beyond delivering healthcare to maintaining good health, through early screening and intervention. To this end, he encouraged GPs to join our Screen for Life@West initiative and Community Health Screening efforts.

For more information, please contact Ms Kristine Lin at 6772 6752 or email: [gp@nuhs.edu.sg](mailto:gp@nuhs.edu.sg).